

ADELINE

2088 asf • 1250 N. Parkshire Way

3 beds + office • 2.5 baths

— CUSTOM-CRAFTED UPGRADES —

9' ceilings

Ceramic tile flooring

Engineered hardwood flooring

Shiplap wall accents

Matte black hardware

Hand-textured walls, grand foyer

Board and batten and true lap siding with brick & stone accents

— KITCHEN —

Full ceiling height custom-built alder stained & paint-grade cabinets

Quartz counter tops with full tiled backsplash

Walk-in pantry, center entertainment island – open to great room

GE Profile Stainless Steel Appliance package

— PRIMARY BEDROOM SUITE —

Tile flooring and quartz counter tops

Separate, dual vanity sinks

Separate room for water closet – walk-in full tiled shower

Large walk-in closet

— GREAT ROOM —

Gas fireplace with brick accent & mantle

Access to entertaining large covered patio

Open to kitchen & dining

— OFFICE —

Separate office/flex room off great room

...Please see Reverse Side for More Details...

DEVELOPED BY



JAYO DEVELOPMENT, INC.

JON SHULTZ
208.761.2047
jshultz@cbboise.com



COLDWELL BANKER
TOMLINSON

www.CherryBlossomMeridian.com



— POWDER ROOM —

Undermount rectangle sink with matte black hardware

— GUEST BATH —

Quartz counter top, tub/shower with full tile surround and tile accents
Tile flooring

Undermount rectangle sink with matte black hardware

— UTILITY ROOM —

Quartz counters and deep utility sink
Folding table and cabinets

Adjacent to primary bedroom for easy access

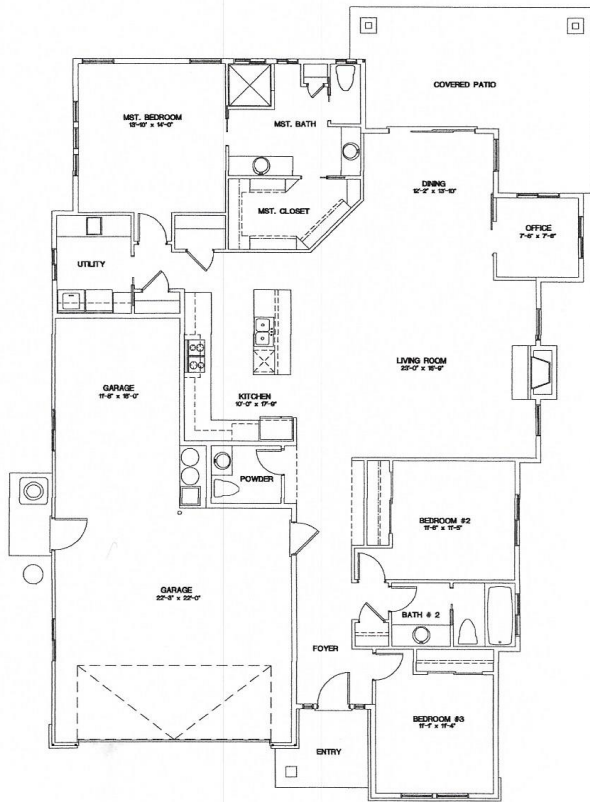
— GARAGE & EXTERIOR —

3-car tandem garage with extended third bay, opener & keyless entry, carriage garage doors

Plumbed for water softener

Large, covered rear patio with gas BBQ line, full perimeter fencing
220 Volt

— CONVENIENT DOWNTOWN MERIDIAN ACCESS —



Floor Plan Similar



Elevation Similar

ADELINE

FLOOR PLAN

2088 ASF

Jayo Construction, Inc.



DEVELOPED BY



JON SHULTZ
208.761.2047
jshultz@cbboise.com



Information deemed reliable, but not guaranteed. Buyer to verify all information. If currently listed with a Broker, this is not intended as solicitation.