



# BELLE FONTAINE

1955 asf • 1417 N Parkshire Way  
3 bed, 2 baths

## — CUSTOM-CRAFTED UPGRADES —

100% Home Energy Rated (HERS)  
9' & 10' ceilings, LVP and ceramic tile flooring  
Satin nickel hardware  
Hand-textured walls & full wood-wrapped windows  
Board and Batten and True Lap siding with stone accents  
Laundry room with utility sink, folding table  
Mud room with bench & coat hooks, broom & storage closets  
1-year builder's warranty, conditioned crawl space  
Covered front patio & large covered rear patio

## — KITCHEN —

Custom painted and stained alder cabinets & walk-in pantry  
Quartz countertops with full tile backsplash  
Bosch stainless steel gas cooktop & stainless steel dishwasher  
Bosch stainless steel wall microwave & wall oven  
Spacious dining open to great room & large rear patio  
Built-in hutch

## — PRIMARY BEDROOM & ENSUITE —

Ceramic tile flooring, quartz countertops & Moen brushed nickel faucets  
Custom stained alder cabinets  
Level entry walk-in tiled shower & separate room for water closet  
Walk-in closet

## — GREAT ROOM —

Gas fireplace with stone accents, mantel & hearth  
10' ceilings, open to kitchen & dining

*...Please see Reverse Side for More Details...*

DEVELOPED BY



**YVONNE EVANS**  
**208.870.1007**  
idahomoveme@gmail.com

**JON SHULTZ**  
**208.761.2047**  
jshultz@cbboise.com



COLDWELL BANKER  
TOMLINSON

[www.CherryBlossomMeridian.com](http://www.CherryBlossomMeridian.com)

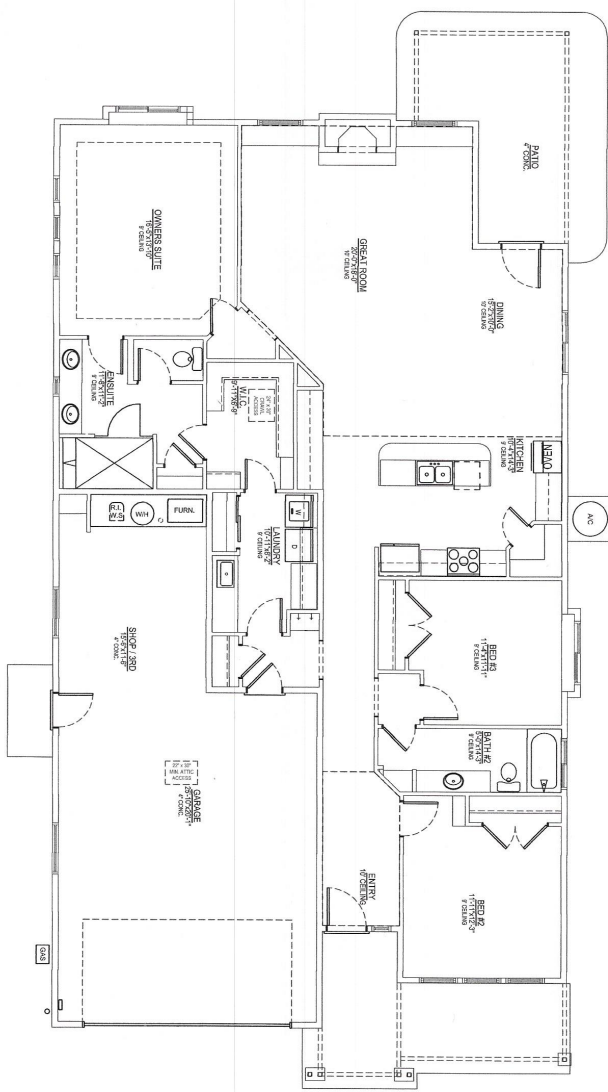


— GUEST BATH —

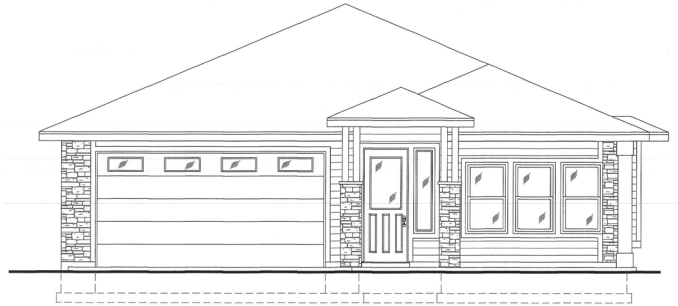
LVP flooring, tub/shower with full tile surround  
Full quartz counter, tile backsplash, & brushed nickel faucets

— GARAGE & EXTERIOR —

3-car extended depth tandem, carriage garage doors with opener & keyless entry  
Finished & painted garage walls  
220 Volt  
Plumbed for water softener  
Gas BBQ stub on covered patio  
Spacious backyard



Floor Plan Similar



Elevation Similar

BELLE  
FONTAINE

FLOORPLAN

1955 ASF



DEVELOPED BY



YVONNE EVANS  
208.870.1007  
idahomoveme@gmail.com

JON SHULTZ  
208.761.2047  
jshultz@cbboise.com

