



# BELLA FONTAINE

2087 asf

4 bed, 3 baths

— **CUSTOM-CRAFTED UPGRADES** —

100% Home Energy Rated (HERS)

9' & 10' ceilings & LVP flooring

Oil-rubbed bronze hardware

Hand-textured walls & full wood-wrapped windows

True Lap siding with stone accents & carriage garage doors

Laundry room with utility sink, folding table, & mud bench

1-year builder's warranty, conditioned crawl space

Front courtyard & large covered rear patio

— **KITCHEN** —

Custom stained knotty alder cabinets & walk-in pantry

Quartz countertops with full backsplash

Bosch stainless steel gas cooktop & stainless steel dishwasher

Bosch stainless steel wall microwave & wall oven

Spacious dining open to great room

— **PRIMARY BEDROOM & ENSUITE** —

Trayed ceiling

Ceramic tile flooring, quartz countertops, & oil-rubbed bronze faucets

Custom alder cabinets

Walk-in tiled shower & separate room for water closet

— **GREAT ROOM** —

Gas fireplace with stone accents & mantel

10' ceilings, open to kitchen & dining

*...Please see Reverse Side for More Details...*

DEVELOPED BY



**YVONNE EVANS**  
**208.870.1007**

idahomoveme@gmail.com

**JON SHULTZ**  
**208.761.2047**

jshultz@cbboise.com



COLDWELL BANKER  
TOMLINSON

[www.CherryBlossomMeridian.com](http://www.CherryBlossomMeridian.com)



— HOBBY/GUEST ROOM —

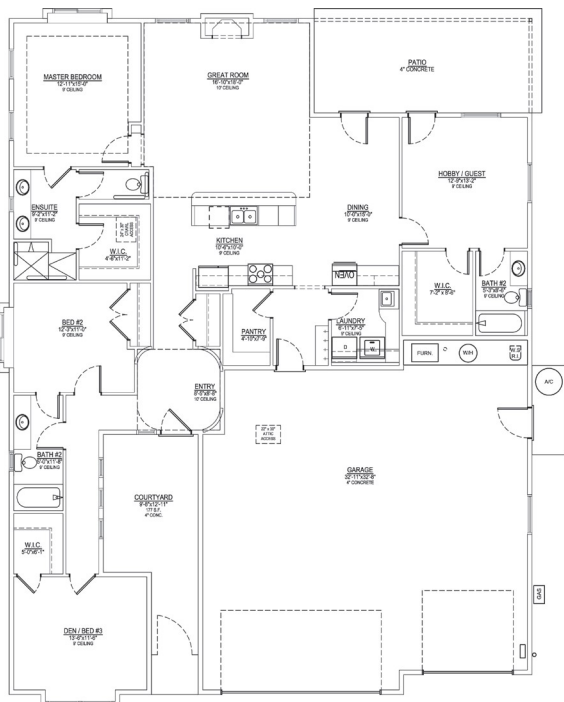
Perfect guest suite with full bath & walk-in closet

— MAIN GUEST BATH —

Tub/shower with full tile surround  
Full quartz counter, tile backsplash, & oil-rubbed bronze faucets

— GARAGE & EXTERIOR —

3-car garage with opener & keyless entry  
Finished & painted garage walls  
Plumbed for water softener  
Gas BBQ stub on covered patio  
Full lawn maintenance provided by homeowners' association



Elevation Similar

BELLA FONTAINE

FLOOR PLAN

2087 ASF

Floor Plan Similar



DEVELOPED BY  
**JAYO**  
JAYO DEVELOPMENT, INC.

**YVONNE EVANS**  
**208.870.1007**  
idahomoveme@gmail.com

**JON SHULTZ**  
**208.761.2047**  
jshultz@cbboise.com

**CB**  
COLDWELL BANKER  
TOMLINSON