



BELLA FONTAINE

2087 asf • 675 W. Cedarburg Dr.
4 bed, 3 baths

— CUSTOM-CRAFTED UPGRADES —

100% Home Energy Rated (HERS)
9' & 10' ceilings & LVP flooring
Oil-rubbed bronze hardware
Hand-textured walls & full wood-wrapped windows
True Lap siding with stone accents & carriage garage doors
Laundry room with utility sink, folding table, & mud bench
1-year builder's warranty, conditioned crawl space
Front courtyard & large covered rear patio

— KITCHEN —

Custom stained knotty alder cabinets & walk-in pantry
Quartz countertops with full backsplash
Bosch stainless steel gas cooktop & stainless steel dishwasher
Bosch stainless steel wall microwave & wall oven
Spacious dining open to great room

— PRIMARY BEDROOM & ENSUITE —

Trayed ceiling
Ceramic tile flooring, quartz countertops, & oil-rubbed bronze faucets
Custom alder cabinets
Walk-in tiled shower & separate room for water closet

— GREAT ROOM —

Gas fireplace with stone accents & mantel
10' ceilings, open to kitchen & dining

...Please see Reverse Side for More Details...

DEVELOPED BY



YVONNE EVANS
208.870.1007
idahomoveme@gmail.com

JON SHULTZ
208.761.2047
jshultz@cbboise.com



COLDWELL BANKER
TOMLINSON

www.CherryBlossomMeridian.com



— HOBBY/GUEST ROOM —

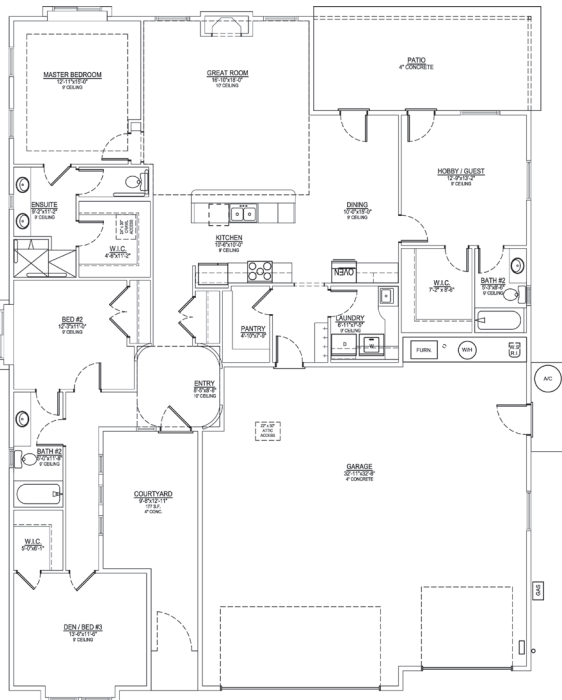
Perfect guest suite with full bath & walk-in closet

— MAIN GUEST BATH —

Tub/shower with full tile surround
Full quartz counter, tile backsplash, & oil-rubbed bronze faucets

— GARAGE & EXTERIOR —

3-car garage with opener & keyless entry
Finished & painted garage walls
Plumbed for water softener
Gas BBQ stub on covered patio
Full lawn maintenance provided by homeowners' association



Elevation Similar

BELLA FONTAINE

FLOOR PLAN

2087 ASF

Floor Plan Similar



DEVELOPED BY
JAYO
JAYO DEVELOPMENT, INC.

YVONNE EVANS
208.870.1007
idahomoveme@gmail.com

JON SHULTZ
208.761.2047
jshultz@cbboise.com

CB
COLDWELL BANKER
TOMLINSON