



CHELSEA

2162 asf
4 bed, 3 baths

— **CUSTOM-CRAFTED UPGRADES** —

100% Home Energy Rated (HERS)
9' & 10' ceilings & LVP flooring
Matte black hardware
Hand-textured walls & full wood-wrapped windows
True Lap siding with brick accents & carriage garage doors
Laundry room utility sink & mud bench
1-year builder's warranty, conditioned crawl space
Covered front & rear patios

— **KITCHEN** —

Custom-built, painted knotty alder cabinets
Quartz countertops with full tile backsplash & walk-in pantry
Bosch stainless steel gas cooktop & dishwasher
Bosch stainless steel wall microwave & wall oven
Stainless steel single-style sink

— **PRIMARY BEDROOM & ENSUITE** —

Trayed ceiling
Ceramic tile flooring, quartz countertops & matte black faucets
Walk-in tiled shower & separate room for water closet
Large walk-in closet

— **GREAT ROOM** —

Gas fireplace with brick surround & mantel; 10' ceilings
Open to dining & kitchen

...Please see Reverse Side for More Details...

DEVELOPED BY



YVONNE EVANS
208.870.1007
idahomoveme@gmail.com

JON SHULTZ
208.761.2047
jshultz@cbboise.com



www.CherryBlossomMeridian.com



— GUEST SUITE OR HOBBY ROOM —

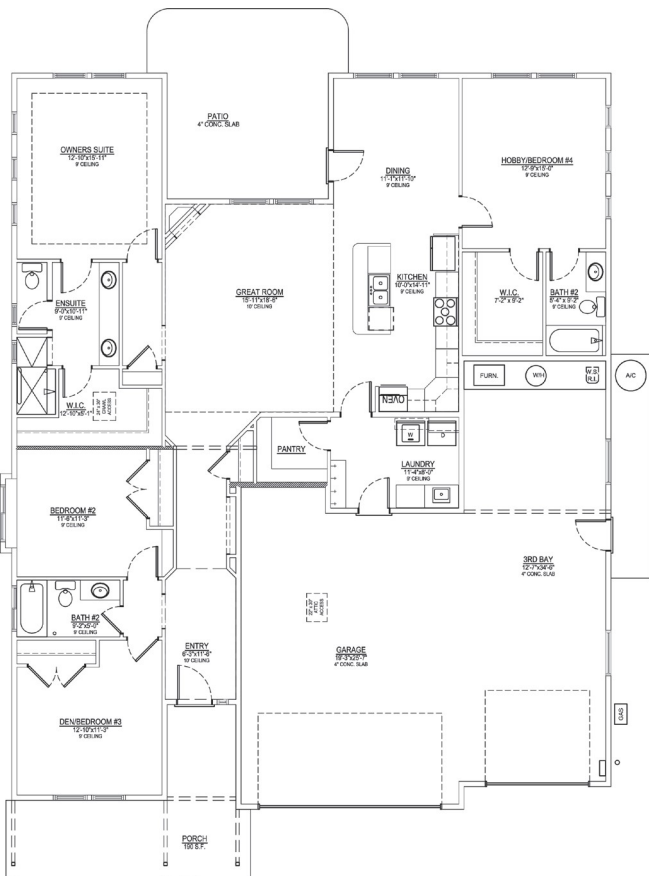
4th bedroom perfect for guests with walk-in closet & full bath

— MAIN GUEST BATH —

Tub/shower with full tile surround
Full quartz counter, tile backsplash, & LVP flooring

— GARAGE & EXTERIOR —

Extra-deep 3-car garage with opener & keyless entry
Fully finished garage walls
Plumbed for water softener
Gas BBQ stub on covered patio
Full lawn maintenance provided by homeowners' association



Elevation Similar

CHELSEA

FLOORPLAN

2162 ASF

Floor Plan Similar



DEVELOPED BY
JAYO
JAYO DEVELOPMENT, INC.

YVONNE EVANS
208.870.1007
idahomoveme@gmail.com

JON SHULTZ
208.761.2047
jshultz@cbboise.com

CB
COLDWELL BANKER
TOMLINSON