



# CHELSEA

1832 asf • 1385 N. Parkshire Way  
3 bed, 2 baths

## — CUSTOM-CRAFTED UPGRADES —

100% Home Energy Rated (HERS)  
9' & 10' ceilings & LVP flooring  
Interior doors with matte black hardware  
Hand-textured walls & full wood-wrapped windows  
True Lap siding with brick accents & carriage garage doors  
Laundry room utility sink & mud bench  
1-year builder's warranty, conditioned crawl space  
Covered front & rear patios

## — KITCHEN —

Custom-built alder cabinets  
Quartz countertops with full tile backsplash & large walk-in pantry  
Bosch stainless steel gas cooktop & dishwasher  
Bosch stainless steel wall microwave & wall oven  
Moen matte black faucet

## — PRIMARY BEDROOM & ENSUITE —

Coffered ceiling  
Ceramic tile flooring, quartz countertops & matte black faucets  
Walk-in tiled shower & separate room for water closet  
Large walk-in closet

## — GREAT ROOM —

Gas fireplace with brick surround & hearth  
10' ceilings

*...Please see Reverse Side for More Details...*

DEVELOPED BY



**YVONNE EVANS**  
**208.870.1007**  
idahomoveme@gmail.com

**JON SHULTZ**  
**208.761.2047**  
jshultz@cbboise.com



COLDWELL BANKER  
TOMLINSON

[www.CherryBlossomMeridian.com](http://www.CherryBlossomMeridian.com)

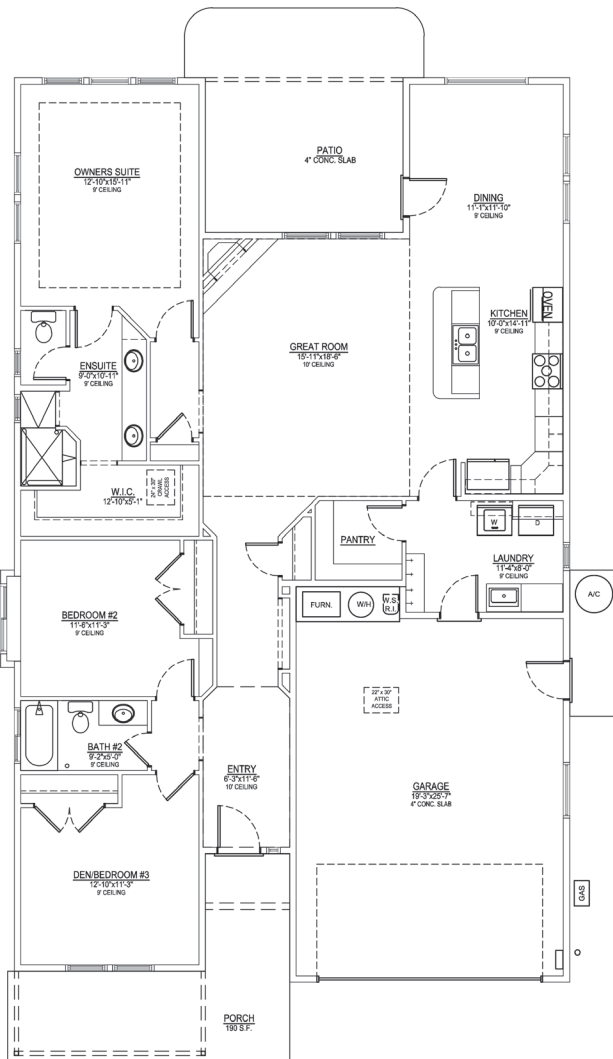


## — GUEST BATH —

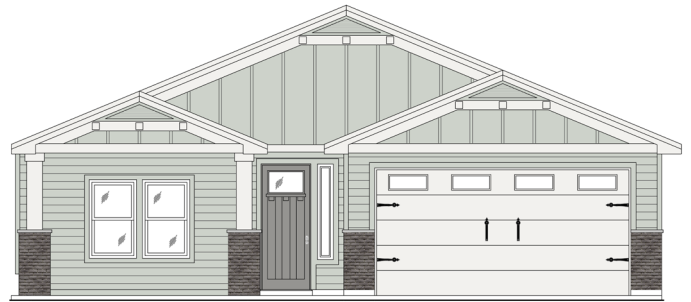
Tub/shower with full tile surround  
Full quartz counter, tile backsplash, & matte black faucets

## — GARAGE & EXTERIOR —

2-car garage with opener & keyless entry  
Fully finished garage walls  
Plumbed for water softener  
Gas BBQ stub on covered patio  
Full lawn maintenance provided by homeowners' association



Floor Plan Similar



Elevation Similar

**CHELSEA**

F L O O R P L A N

1832 ASF



DEVELOPED BY



JAYO DEVELOPMENT, INC.

**YVONNE EVANS**  
**208.870.1007**  
idahomoveme@gmail.com

**JON SHULTZ**  
**208.761.2047**  
jshultz@cbboise.com

**COLDWELL BANKER**  
**TOMLINSON**

Information deemed reliable, but not guaranteed. Buyer to verify all information. If currently listed with a Broker, this is not intended as solicitation.