



ESPRIT

1696 asf • 1529 N Parkshire Way
3 bed, 2 baths

— CUSTOM-CRAFTED UPGRADES —

100% Home Energy Rated (HERS)

9' ceilings, LVP and ceramic tile flooring

Matte black hardware

Hand-textured walls & full wood-wrapped windows

Board and Batten and True Lap siding with stone accents

Laundry room with utility sink, folding table

Mud room with bench & coat hooks

1-year builder's warranty, conditioned crawl space

Covered front patio & large covered rear patio

— KITCHEN —

Custom painted and stained alder cabinets & walk-in pantry

Quartz countertops with full tile backsplash

Bosch stainless steel gas cooktop & stainless steel dishwasher

Bosch stainless steel wall microwave & wall oven

Spacious dining open to great room & rear patio

— PRIMARY BEDROOM & ENSUITE —

Ceramic tile flooring, quartz countertops & Moen matte black faucets

Custom stained alder cabinets

Walk-in tiled shower & separate room for water closet

Walk-in closet

— GREAT ROOM —

Gas fireplace with stone accents & mantel

9' ceilings, open to kitchen & dining

...Please see Reverse Side for More Details...

DEVELOPED BY



YVONNE EVANS
208.870.1007

idahomoveme@gmail.com

JON SHULTZ
208.761.2047

jshultz@cbboise.com



COLDWELL BANKER
TOMLINSON

www.CherryBlossomMeridian.com

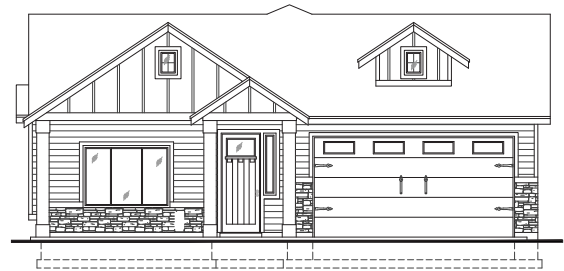
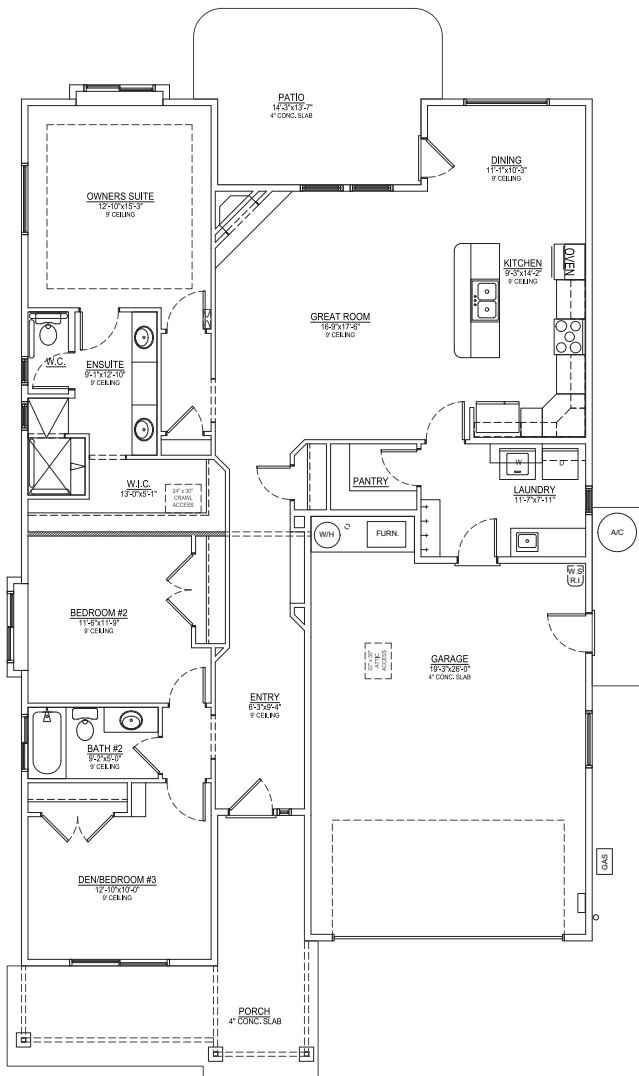


— **GUEST BATH** —

LVP flooring, tub/shower with full tile surround
Full quartz counter, tile backsplash, & matte black faucets

— **GARAGE & EXTERIOR** —

2-car, carriage garage doors with opener & keyless entry
Finished & painted garage walls
220 Volt
Plumbed for water softener
Gas BBQ stub on covered patio



Elevation Similar

ESPRIT

FLOORPLAN

1696 ASF

Floor Plan Similar



DEVELOPED BY
JAYO
JAYO DEVELOPMENT, INC.

YVONNE EVANS
208.870.1007
idahomoveme@gmail.com

JON SHULTZ
208.761.2047
jshultz@cbboise.com

CB
COLDWELL BANKER
TOMLINSON