



THE EVANS

1778 asf • 1469 N. Parkshire Way
3 beds • 2 baths

— CUSTOM-CRAFTED UPGRADES —

9' & 10' ceilings
Ceramic tile flooring
Engineered hardwood flooring
Grand foyer with architectural inset display
Matte black hardware
Hand-textured walls
Board and batten and true lap siding with brick & stone accents

— KITCHEN —

Full ceiling height custom-built alder stained & paint-grade cabinets
Quartz counter tops with full tiled backsplash
Walk-in pantry, center entertainment island – open to great room
GE Profile Stainless Steel Appliance package

— PRIMARY BEDROOM SUITE —

Tile flooring and quartz counter tops
Separate, dual vanity sinks
Separate room for water closet – walk-in full tiled shower
Large walk-in closet
Vaulted Ceiling

— GREAT ROOM —

Gas fireplace with floor-to-ceiling stone accents

— DINING —

Adjacent to kitchen with access to covered patio

...Please see Reverse Side for More Details...

DEVELOPED BY



JON SHULTZ
208.761.2047
jshultz@cbboise.com

KEVIN O'HARA
208 890-6111
kohara@cbboise.com



— GUEST BATH —

Quartz counter top, tub/shower with full tile surround and tile accents
Tile flooring

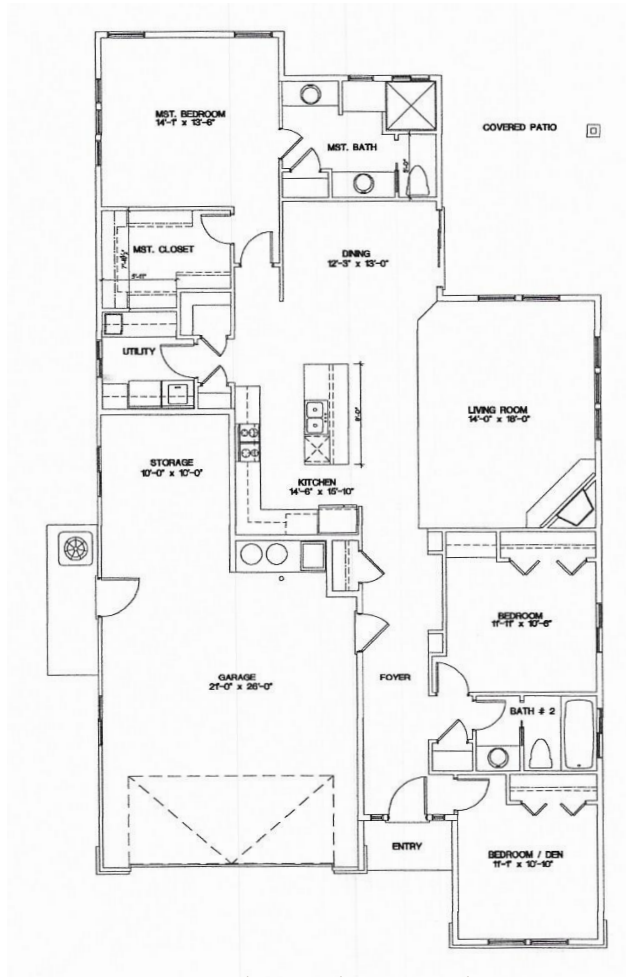
— UTILITY ROOM —

Quartz counters and deep utility sink
Folding table and cabinets
Adjacent to primary bedroom for easy access

— GARAGE & EXTERIOR —

3-car tandem garage with opener & keyless entry, carriage garage doors
Plumbed for water softener
220 volt
Covered rear patio with gas BBQ line, full perimeter fencing
Finished landscape included

— CONVENIENT DOWNTOWN MERIDIAN ACCESS —



Floor Plan Similar



Elevation Similar

THE EVANS

FLOOR PLAN

1778 ASF

Jayo Construction, Inc.



DEVELOPED BY



JON SHULTZ
208.761.2047
jshultz@cbboise.com

KEVIN O'HARA
208 890-6111
kohara@cbboise.com

COLDWELL BANKER
TOMLINSON

Information deemed reliable, but not guaranteed. Buyer to verify all information. If currently listed with a Broker, this is not intended as solicitation.