

MADRID

1931 asf • 684 W Cedarburg Dr.
3 beds, 2 baths

— CUSTOM-CRAFTED UPGRADES —

Home Energy Rated (HERS)
9' & 10' ceilings • LVP flooring • Blinds included
Interior doors with matte black hardware
Hand-textured walls & full wood-wrapped windows
True lap siding with stone accents
Carriage garage doors
Laundry room utility sink
1-year builder's warranty, conditioned crawl space
Covered front porch and two rear patios

— KITCHEN —

Custom stained alder cabinets
Quartz countertops with full tile backsplash
Bosch stainless steel gas cooktop & stainless steel dishwasher
Bosch stainless steel wall microwave & wall oven
Large walk-in pantry

— PRIMARY BEDROOM SUITE —

Tile flooring, quartz countertops
Moen matte black faucets
Custom alder cabinets
No step, walk-in tiled shower & separate room for water closet

— GREAT ROOM —

Gas fireplace with stone accents and mantel
10' ceilings, views of common areas

...Please see Reverse Side for More Details...

DEVELOPED BY



YVONNE EVANS
208.870.1007
idahomoveme@gmail.com

JON SHULTZ
208.761.2047
jshultz@cbboise.com



www.CherryBlossomMeridian.com



— GUEST BATH —

Tub/shower with full tile surround

Full quartz counter, tile backsplash, & Moen matte black faucets

— GARAGE & EXTERIOR —

3-car garage with extended third bay, opener,

keyless entry & belt-driven door operation

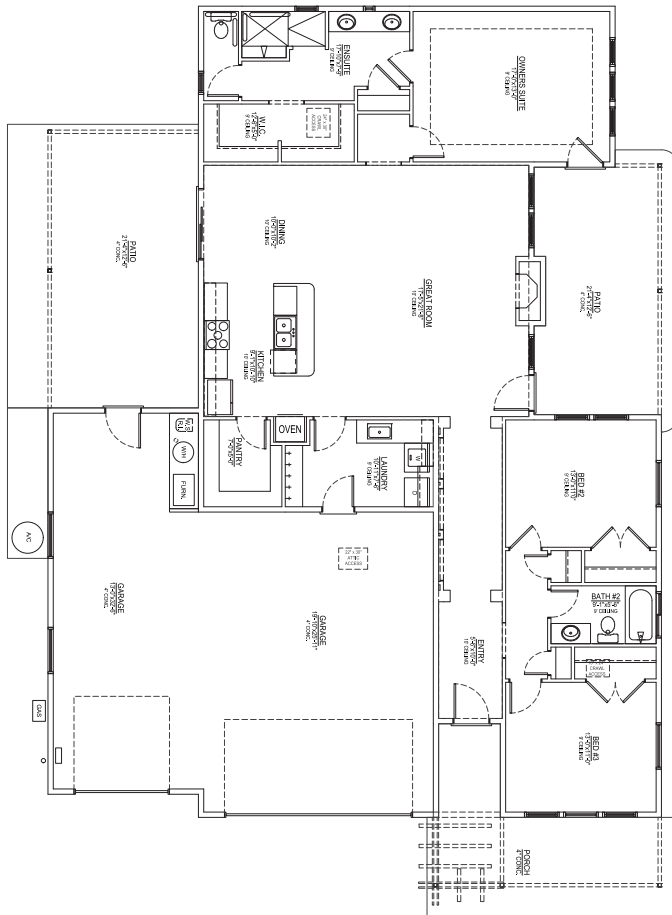
Fully finished & painted garage walls

220 volt

Plumbed for water softener

Gas BBQ stub on covered patio

Full lawn maintenance provided by homeowners' association



Floor Plan Similar



Elevation Similar

MADRID

FLOOR PLAN

1931 ASF



DEVELOPED BY
JAYO
JAYO DEVELOPMENT, INC.

YVONNE EVANS
208.870.1007
idahomoveme@gmail.com

JON SHULTZ
208.761.2047
jshultz@cbboise.com

CB
COLDWELL BANKER
TOMLINSON

Information deemed reliable, but not guaranteed. Buyer to verify all information. If currently listed with a Broker, this is not intended as solicitation.