



MAGNOLIA

2026 asf • 1311 N. Parkshire Way
3 beds + office • 2 baths

— CUSTOM-CRAFTED UPGRADES —

9' and 10' ceilings
Ceramic tile floors
Engineered hardwood flooring
Architectural inset
Brushed nickel hardware
Hand-textured walls
True lap siding with stone accents

— KITCHEN —

Custom-built clear alder & paint-grade cabinets
Quartz countertops with tile backsplash
Center entertainment island – open to great room
GE Profile Stainless Steel Appliances

— PRIMARY BEDROOM SUITE —

Tile flooring and quartz countertops
Separate, dual vanity sinks
Separate room for water closet – walk-in tiled shower

— GREAT ROOM —

Gas fireplace with shiplap & tile accent

— OFFICE —

Separate office/flex room off entry

...Please see Reverse Side for More Details...

DEVELOPED BY



YVONNE EVANS
208.870.1007
idahomoveme@gmail.com

JON SHULTZ
208.761.2047
jshultz@cbboise.com



www.CherryBlossomMeridian.com

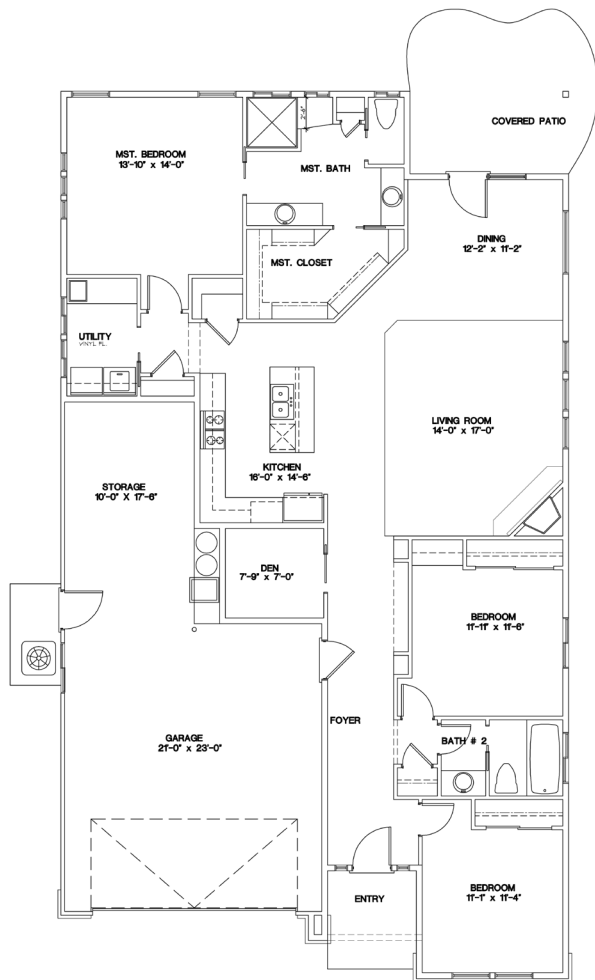


— GUEST BATH —

Quartz countertop with full tile surround and tile accents
Tile flooring

— GARAGE & EXTERIOR —

3-car tandem garage with opener & keyless entry
Plumbed for water softener
Covered rear patio with gas BBQ line
Full lawn maintenance provided by homeowners' association



Floor Plan Similar



Elevation Similar

MAGNOLIA

FLOOR PLAN

2026 ASF

Jayo Construction, Inc.



DEVELOPED BY
JAYO
JAYO DEVELOPMENT, INC.

YVONNE EVANS
208.870.1007
idahomoveme@gmail.com

JON SHULTZ
208.761.2047
jshultz@cbboise.com

CB
COLDWELL BANKER
TOMLINSON