



# WELLINGTON

2038 asf

3 bed + den, 2.5 baths, 2-car garage

## — CUSTOM-CRAFTED UPGRADES —

9' and 13' ceilings

Ceramic tile floors

Engineered hardwood floors

Architectural inset

Hand-textured walls

Brushed nickel hardware

True Lap siding with ledgestone accents & carriage garage doors

## — KITCHEN —

Custom alder stained & painted cabinets with double upper glass doors

Large walk-in pantry

Quartz & slab granite with full accented tile backsplash

Center entertainment island – open to great room

GE Profile stainless steel appliances

## — PRIMARY BEDROOM SUITE —

Tile flooring and granite countertops

Dual vanity sinks, separate room for water closet

Walk-in tiled shower, large walk-in closet

## — GREAT ROOM —

Gas fireplace with ledgestone accent

Built-in entertainment center cabinets, 13' ceilings

Den/flex room with built-in desk & granite counter

*...Please see Reverse Side for More Details...*

DEVELOPED BY



**YVONNE EVANS**  
**208.870.1007**

idahomoveme@gmail.com

**JON SHULTZ**  
**208.761.2047**

jshultz@cbboise.com



COLDWELL BANKER  
TOMLINSON

[www.CherryBlossomMeridian.com](http://www.CherryBlossomMeridian.com)



— LAUNDRY ROOM —

Spacious laundry room with large folding table, sink, cabinets, & mud bench

— GUEST BATH —

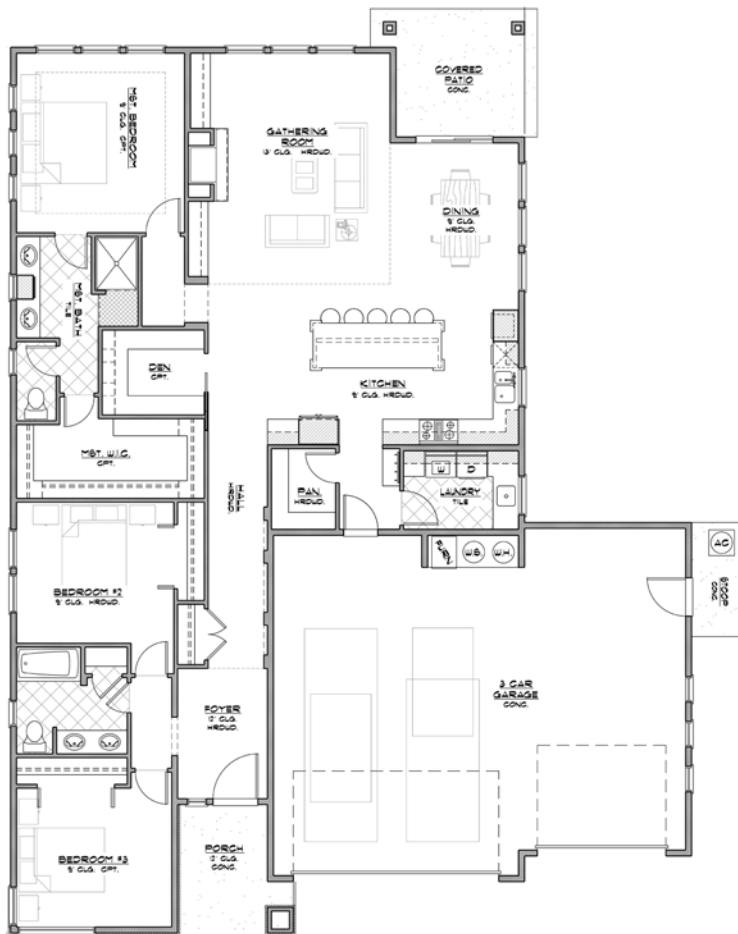
Tile flooring & granite countertops, full tub/shower surround, & dual vanities  
Additional 1/2 bath off great room

— GARAGE & EXTERIOR —

2-car garage with keyless entry  
Plumbed for water softener

Covered rear patio with gas BBQ hookup

Full lawn maintenance provided by homeowners' association



Floor Plan Similar  
2-car garage



Elevation Similar

# WELLINGTON

FLOOR PLAN

2038 ASF



DEVELOPED BY  
**JAYO**  
JAYO DEVELOPMENT, INC.

**YVONNE EVANS**  
**208.870.1007**  
idahomoveme@gmail.com

**JON SHULTZ**  
**208.761.2047**  
jshultz@cbboise.com

**CB**  
COLDWELL BANKER  
TOMLINSON