



WINSFORD

2178 asf • 1291 N. Parkshire Way

3 bedrooms + den, 2 baths

— CUSTOM-CRAFTED UPGRADES —

9' and 10' ceilings

Tile flooring

Engineered hardwood floors

Architectural inset, hand-textured walls

Matte black hardware

Board and batten siding with stone accents & carriage garage doors

— KITCHEN —

Custom alderwood painted and stained cabinets
with upper architectural lighting

Large walk-in pantry

Quartz countertops with full tile backsplash

Large center entertainment island – open to great room

GE Profile stainless steel appliances

Spacious dining room open to patio

— PRIMARY BEDROOM & ENSUITE —

Tile flooring and quartz countertops

Separate, dual vanity sinks, separate room for water closet

Walk-in tiled shower, large walk-in closet

— GREAT ROOM —

Gas fireplace with stone accent & raised ceilings

— OFFICE —

Separate tech room with built-in desk with quartz counter

...Please see Reverse Side for More Details...

DEVELOPED BY



YVONNE EVANS
208.870.1007

idahomoveme@gmail.com

JON SHULTZ
208.761.2047

jsultz@cbboise.com



COLDWELL BANKER
TOMLINSON

www.CherryBlossomMeridian.com



— LAUNDRY ROOM —

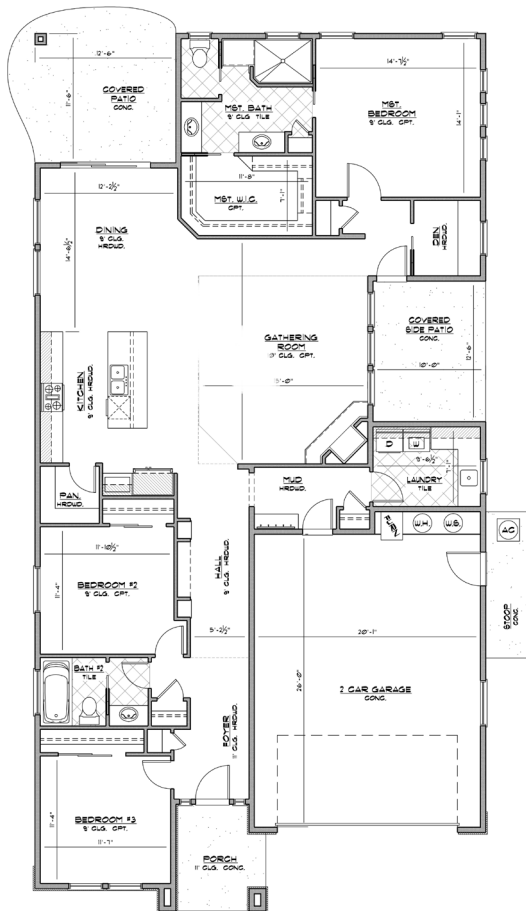
Large folding table, sink & cabinets
Separate, large mud room with closet and bench

— GUEST BATH —

Quartz countertop with full tile surround, dual vanities & tile in tub/shower
Tile flooring

— GARAGE & EXTERIOR —

2-car, extra-wide garage with keyless entry
Plumbed for water softener
2 covered patios (rear & side) with one gas BBQ hookup
Full lawn maintenance provided by homeowners' association



Floor Plan Similar



Elevation Similar

WINSFORD

FLOOR PLAN

2178 ASF

Jayo Construction, Inc.



DEVELOPED BY
JAYO
JAYO DEVELOPMENT, INC.

YVONNE EVANS
208.870.1007
idahomoveme@gmail.com

JON SHULTZ
208.761.2047
jshultz@cbboise.com

CB
COLDWELL BANKER
TOMLINSON

Information deemed reliable, but not guaranteed. Buyer to verify all information. If currently listed with a Broker, this is not intended as solicitation.