



WINSFORD

2052 asf • 3 beds + den • 2 baths

— CUSTOM-CRAFTED UPGRADES —

9' and 11' ceilings

Ceramic tile floors

Engineered hardwood floors

Architectural inset, hand-textured walls

Moen matte black hardware

Board and batten siding with brick accents & carriage garage doors

— KITCHEN —

Custom alder painted cabinets with upper architectural lighting

Large walk-in pantry

Quartz countertops with full tile backsplash

Center entertainment island – open to great room

GE Profile stainless steel appliances

— ENSUITE —

Tile flooring and quartz countertops

Separate, dual vanity sinks, separate room for water closet

Walk-in tiled shower, large walk-in closet

— GREAT ROOM —

Gas fireplace with brick accent & raised ceilings

— OFFICE —

Separate office/flex room with built-in desk with quartz counter

...Please see Reverse Side for More Details...

DEVELOPED BY



YVONNE EVANS
208.870.1007

yevans@idahomoveme.com

JON SHULTZ
208.761.2047

jshultz@cbboise.com



COLDWELL BANKER
TOMLINSON

www.CherryBlossomMeridian.com



— LAUNDRY ROOM —

Large folding table, sink & cabinets
Separate mud room with closet

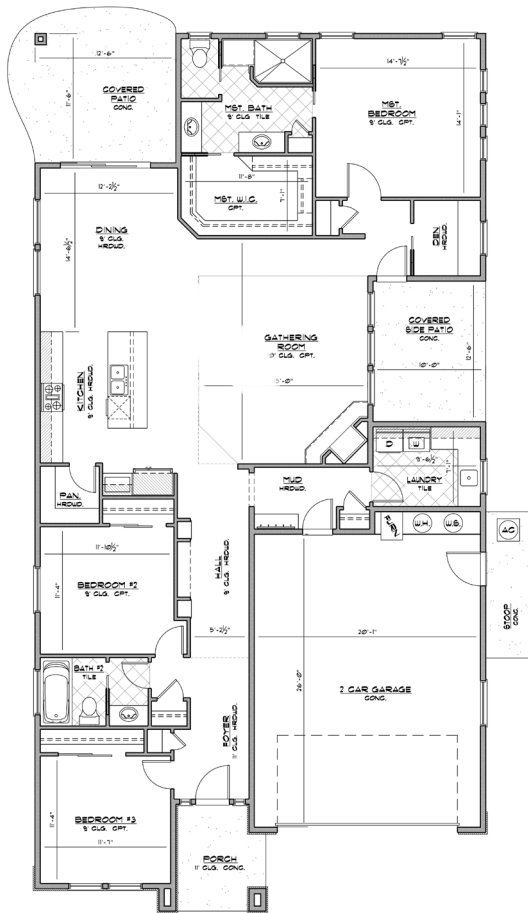
— GUEST BATH —

Quartz countertop with full tile surround & tile in tub/shower
Tile flooring

— GARAGE & EXTERIOR —

2-car, extra-deep garage with keyless entry
Plumbed for water softener

2 covered patios (rear & side) with one gas BBQ hookup
Full lawn maintenance provided by homeowners' association



Floor Plan Similar



Elevation Similar

WINSFORD

FLOORPLAN

2052 ASF

Jayo Construction, Inc.



DEVELOPED BY



YVONNE EVANS
208.870.1007

yevans@idahomoveme.com

JON SHULTZ

208.761.2047

jshultz@cbboise.com



COLDWELL BANKER
TOMLINSON